

HUNTER'S POINTE I

BEING SITUATED IN NE 1/4, SECTION 9 AND NW 1/4, SECTION 10, T7N-R2E
MADISON, COUNTY, MISSISSIPPI



SURVEYED AND PLATTED BY
KARL P. LONG, CONSULTING ENGINEER
JACKSON, MISSISSIPPI

For amendment
to protective covenants
see Book 651 Page 389
Billy V. Cooper,
by n. Wright, DC.

LEGEND

- 10' UTILITY EASEMENT (UNLESS NOTED)
- IRON PIN

NOTE: ALL DIMENSIONS IN CURVES SHOWN ARE CHORD DISTANCES.

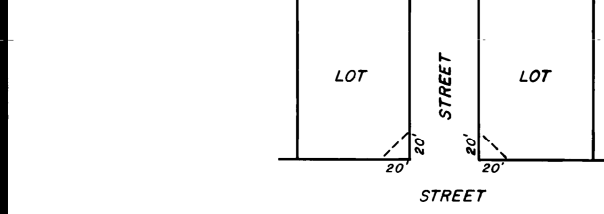
IRON PINS SET ON LOT CORNERS.

ALL ANGLES ARE 90° UNLESS OTHERWISE NOTED.

CURVE DATA: HUNTER'S POINT I

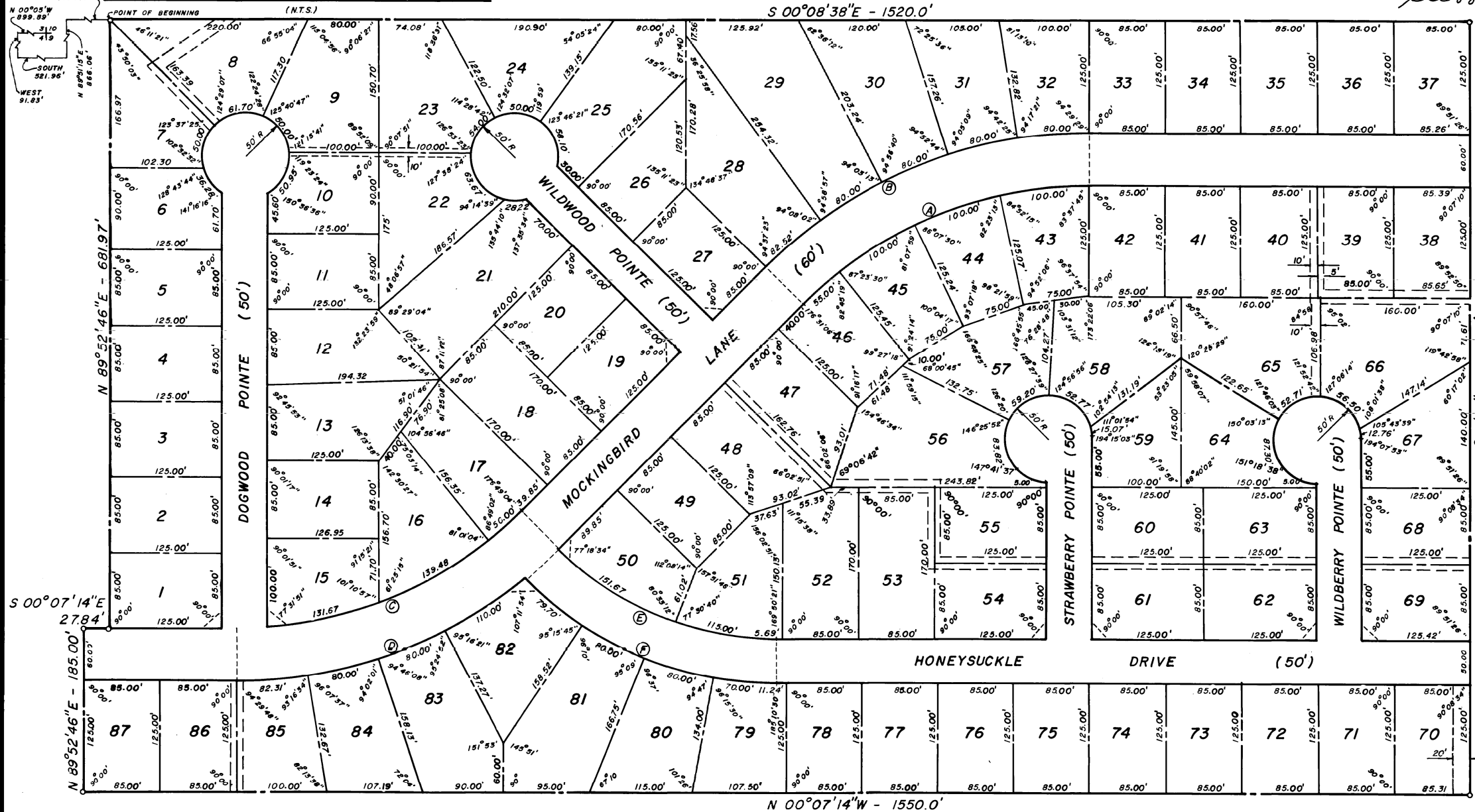
*A	*B	*C
Δ = 45°11'23"	Δ = 45°11'23"	Δ = 45°12'47"
D = 12.7157'	D = 11.2215'	D = 12.7235'
T = 187.52'	T = 212.48'	T = 187.51'
L = 355.39'	L = 402.71'	L = 355.35'
R = 450.59'	R = 510.59'	R = 450.31'

*D	*E	*F
Δ = 45°12'47"	Δ = 44°47'14"	Δ = 44°47'14"
D = 11.2275'	D = 16.8993'	D = 14.7274'
T = 212.49'	T = 139.70'	T = 160.30'
L = 402.70'	L = 265.02'	L = 304.11'
R = 510.31'	R = 339.04'	R = 389.04'



TYPICAL EASEMENT FOR CORNER LOTS

SCALE: 1" = 100'



SURVEYOR'S CERTIFICATE
STATE OF MISSISSIPPI
COUNTY OF MADISON

I, Karl P. Long, Registered Land Surveyor, do hereby certify that, at the request of the undersigned OWNERS, I have subdivided and platted the following described land being situated in the NW 1/4 of Section 10, and the NE 1/4 of Section 9, T7N, R2E, Madison County, Mississippi, containing 30.38 acres, and being more particularly described as follows:

COMMENCING at the common corner of Section 3, 4, 9 and 10, T7N, R2E, and run N 00°05' W along the section line 899.89ft; thence West 91.83 ft; thence south 521.96 ft; thence N 89°51' 15" E - 866.06 ft; thence S 00°08' 38" E - 1520.00 ft. to the POINT OF BEGINNING; run thence S 00°08' 38" E - 1520.00 ft. to a point on the right of way of Hoy Road; thence S 89°44' 12" W - 866.61' ft. along said road; thence N 00°07' 14" W - 1550.00 ft; thence N 89°52' 46" E - 185.00 ft; thence S 00°07' 14" E - 27.84 ft; thence N 89°52' 46" E - 681.97 ft. to the POINT OF BEGINNING.

WITNESS MY SIGNATURE on this the 7 day of MAY, 1986.
Karl P. Long
Karl P. Long, L. S. #2221

OWNER'S CERTIFICATE
STATE OF MISSISSIPPI
COUNTY OF MADISON

We, Mark S. Jordan and William J. Shanks, do hereby certify that the aforementioned are the Owners of the land described in the foregoing Certificate of Karl P. Long, Registered Land Surveyor, and that acting as the duly authorized officials of the aforementioned have caused the same to be subdivided and platted as shown hereon, and have designated the same as HUNTER'S POINT I and dedicate the street rights of way, utilities, and easements as shown to public use forever.

WITNESS OUR SIGNATURES on this the 7 day of MAY, 1986.

Mark S. Jordan
Mark S. Jordan
William J. Shanks
William J. Shanks



ACKNOWLEDGMENT
STATE OF MISSISSIPPI
COUNTY OF MADISON

Personally appeared before me, the undersigned officer in and for the jurisdiction aforesaid, the within names Mark S. Jordan and William J. Shanks, the Owners, each of whom acknowledged to me that he signed and delivered this plat and the Certificate thereon as his own act and deed and Karl P. Long, Registered Land Surveyor, who also acknowledged to me that he signed and delivered this plat and the Certificate thereon as his own act and deed; on the day and year herein mentioned.

Given under my hand and seal of office on this 7 day of may, 1986.

Billy V. Cooper
Notary Public
Chancery Clerk
by n. Wright, DC.

1-4-88
My Commission Expires



TOWN APPROVAL CERTIFICATE

I hereby certify that this is a true copy and that this plat was approved by the Mayor and Board of Aldermen in session on this the 6 day of May, 1986.

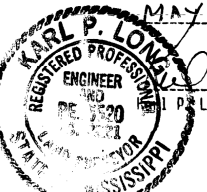
Nancy Harris
MAYOR
Karla Cross
TOWN CLERK

CERTIFICATE OF COMPARISON
STATE OF MISSISSIPPI
COUNTY OF MADISON

We, Billy V. Cooper, Chancery Clerk and Karl P. Long, Registered Land Surveyor, do hereby certify that we have carefully compared this plat of HUNTER'S POINT I with the original thereof, and find it to be a true and correct copy of said plat.

Given under my hand and seal of office on this 7 day of MAY, 1986.

Karl P. Long
Karl P. Long, L. S. #2221
Billy V. Cooper
Billy V. Cooper, Chancery Clerk
by n. Wright, DC.



FILING AND RECORDATION
STATE OF MISSISSIPPI
COUNTY OF Madison

I, Billy V. Cooper, Chancery Clerk for said County and State, do hereby certify that this duplicate Plat of HUNTER'S POINT I, was filed for record in my office on this the 7 day of may, 1986, and was duly recorded in Slide 13, at Page 92 of the records and maps and plats of the Madison County, Mississippi.

Given under my hand and seal of office on this the 7 day of may, 1986.

Billy V. Cooper
Billy V. Cooper, Chancery Clerk
by n. Wright, DC.

