

TYPICAL EASEMENT FOR CORNER LOTS

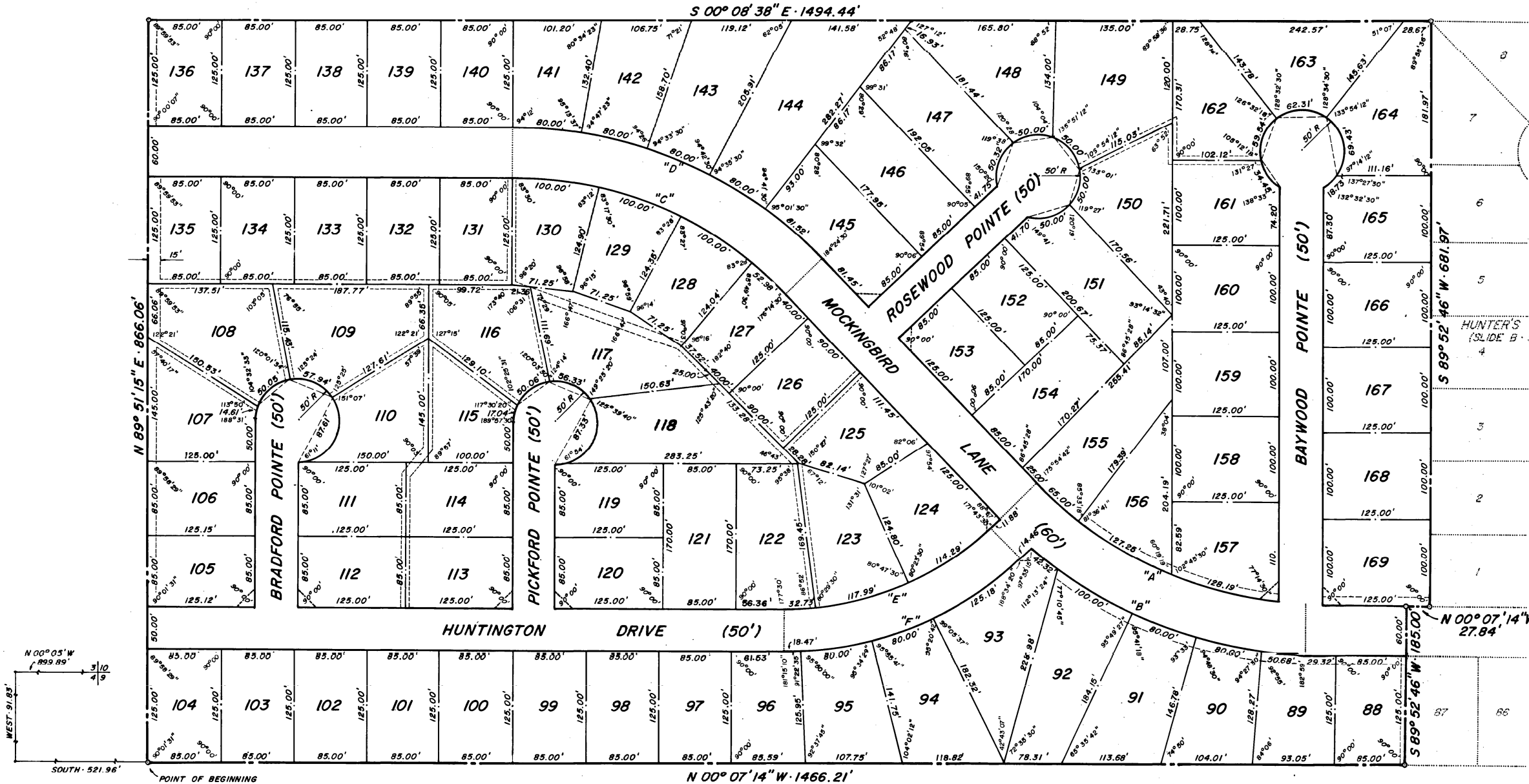
HUNTER'S POINTE II

BEING SITUATED IN NE 1/4, SECTION 9 AND NW 1/4, SECTION 10, T7N-R2E
MADISON COUNTY, MISSISSIPPI

SCALE: 1"=100'



SURVEYED AND PLATTED BY
KARL P. LONG, CONSULTING ENGINEER
JACKSON, MISSISSIPPI



NOTE: ALL DIMENSIONS IN CURVES SHOWN ARE CHORD DISTANCES.

IRON PINS SET ON LOT CORNERS.

UTILITY EASEMENT (10' UNLESS OTHERWISE NOTED.)

CURVE DATA

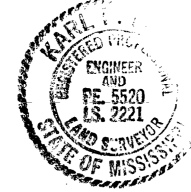
	"A"	"B"	"C"
Δ	46°32'20"	46°32'20"	46°33'44"
D	13.1691'	11.5731'	13.1770'
T	187.10'	212.90'	187.09'
L	353.39'	402.13'	353.36'
R	435.0774'	495.0774'	434.8166'
	"D"	"E"	"F"
Δ	46°33'44"	43°27'40"	43°27'40"
D	11.5792'	16.3074'	14.2758'
T	212.91'	140.04'	159.96'
L	402.12'	266.51'	304.44'
R	494.8166'	351.3490'	401.3490'

CERTIFICATE OF COMPARISON
STATE OF MISSISSIPPI
COUNTY OF MADISON

We, Billy V. Cooper, Chancery Court Clerk of said County, and Karl P. Long, Registered Land Surveyor, do hereby certify that we have carefully compared this plat of Hunter's Pointe II with the original thereof, as made by the said Karl P. Long, Registered Land Surveyor, and find it to be a true and correct copy of said map or plat.

Given under my hand and seal of office on this the 8 day of October, 1986.

Karl P. Long
Karl P. Long, R.L.S. #2221
Billy V. Cooper
Billy V. Cooper, Chancery Clerk
By: *Kareguy D.C.*



SURVEYOR'S CERTIFICATE
STATE OF MISSISSIPPI
COUNTY OF MADISON

I, Karl P. Long, Registered Land Surveyor, do hereby certify that at the request of the undersigned OWNERS, I have subdivided and platted the following described land being situated in the NE 1/4 of Sec. 9 and the NW 1/4 of Sec. 10, T7N-R2E, Madison County, Mississippi, containing 29.59 acres and being more particularly described as follows:

Commencing at the common corner of Sections 3, 4, 9, and 10, T7N, R2E, run N 00° 05' W along the section line 899.89 ft; thence West - 91.83 ft; thence South - 521.96 ft. to the POINT OF BEGINNING; run thence N 89° 51' 15" E - 866.06 ft; thence S 00° 08' 38" E - 1494.44 ft. to the northeast corner of HUNTER'S POINTE I; thence S 89° 52' 46" W - 681.97 ft. along the north line of HUNTER'S POINTE I; thence N 00° 07' 14" W - 27.84 ft. along the east right of way of Mockingbird Lane; thence S 89° 52' 46" W - 185.00 ft. along the north line of HUNTER'S POINTE I to the northwest corner thereof; thence run N 00° 07' 14" W - 1466.21 ft. to the POINT OF BEGINNING.

WITNESS MY SIGNATURE on this the 8 day of OCTOBER, 1986.
Karl P. Long
Karl P. Long, L.S. #2221



OWNER'S CERTIFICATE
STATE OF MISSISSIPPI
COUNTY OF MADISON

We, Mark S. Jordan and William J. Shanks, do hereby certify that the aforementioned are the Owners of the land described in the foregoing Certificate of Karl P. Long, Registered Land Surveyor, and that acting as the duly authorized officials of the aforementioned have caused the same to be subdivided and platted as shown hereon, and have designated the same as Hunter Pointe II and dedicate the street rights of way, utilities, and easements as shown, to public use forever.

WITNESS OUR SIGNATURE on this 7 day of Oct, 1986.

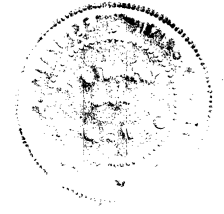
Mark S. Jordan
Mark S. Jordan
William J. Shanks
William J. Shanks

ACKNOWLEDGMENT
STATE OF MISSISSIPPI
COUNTY OF HINDS

PERSONALLY APPEARED BEFORE ME, the undersigned officer in and for said jurisdiction, the within named Mark S. Jordan and William J. Shanks, the OWNERS, each of whom acknowledged to me that he signed and delivered this Plat and the Certificate thereon as his own act and deed and Karl P. Long, Registered Land Surveyor, who also acknowledged to me that he signed and delivered this Plat and the Certificate thereon as his own act and deed; on the day and year herein mentioned.

GIVEN UNDER MY HAND and official seal on this the 7 day of Oct, 1986.

Samuel King
Notary Public
My Commission Expires:



CITY OF MADISON APPROVAL
STATE OF MISSISSIPPI
COUNTY OF MADISON

I hereby certify that this is a true copy and that this plat was approved by the Mayor and Board of Aldermen in session on this the 7 day of October, 1986.

Mary Ann
MAYOR
Karla Cross
TOWN CLERK

FILING AND RECORDATION
STATE OF MISSISSIPPI
COUNTY OF MADISON

I, Billy V. Cooper, Chancery Clerk in and for said County and State, do hereby certify that this Duplicate Plat of Hunter's Pointe II was filed for record in my office on this the 8 day of October, 1986, and was duly recorded in Plat Slide C, Slot 1 of the records and maps and plats of Madison County, Mississippi.

Given under my hand and seal of office on this the 8 day of October, 1986.

Billy V. Cooper
Billy V. Cooper, Chancery Clerk
By: *Kareguy D.C.*

