

HUNTER'S POINTE III

SITUATED IN SW 1/4 OF SECTION 3 AND IN SE 1/4 OF SECTION 4, T7N - R2E,
MADISON COUNTY, MISSISSIPPI.



SCALE: 1" = 60'

SURVEYED AND PLATTED BY
KARL P. LONG, CONSULTING ENGINEER
JACKSON, MISSISSIPPI

LEGEND

10' UTILITY EASEMENT
(UNLESS NOTED)

IRON PIN

NOTE: ALL DIMENSIONS IN CURVED SHAPES ARE
CHORD DISTANCES

IRON PINS SET ON LOT CORNERS.

CITY APPROVAL CERTIFICATE
STATE OF MISSISSIPPI
CITY OF MADISON
COUNTY OF MADISON

I hereby certify that this is a true copy and that this
plat was approved by the Mayor and Board of Aldermen in session
on the 21st day of AUGUST, 1990.

Mary Hawkins
MAYOR, CITY OF MADISON

ATTEST:
Susan B. Crandall
CITY CLERK, CITY OF MADISON

COUNTY APPROVAL CERTIFICATION
STATE OF MISSISSIPPI
COUNTY OF MADISON

I hereby certify that this plat was approved by the Board of
Supervisors of Madison County, Mississippi in session on the
5th day of September, 1990.

BY: *Dand H. Richardson*
President-Board of Supervisors Madison County, MS

ATTEST: *Billy V. Cooper*
Chancery Clerk - Madison County, MS



ENGINEER'S APPROVAL
STATE OF MISSISSIPPI
CITY OF MADISON
COUNTY OF MADISON

I have examined this plat and find that it conforms to all
conditions set forth on the preliminary plat as approved by the
Mayor and Board of Aldermen and thus recommend final approval.

Karl P. Long
CITY ENGINEER

CERTIFICATE OF COMPARISON
STATE OF MISSISSIPPI
COUNTY OF MADISON

We, Billy V. Cooper, Chancery Court Clerk of said County, and
Karl P. Long, Registered Land Surveyor, do hereby certify that we
have carefully compared this plat of Hunter's Pointe III with the
original thereof and find it to be a true and correct copy of
said map or plat.

Given under my hand and seal of office on this the 27th day
of August, 1990.

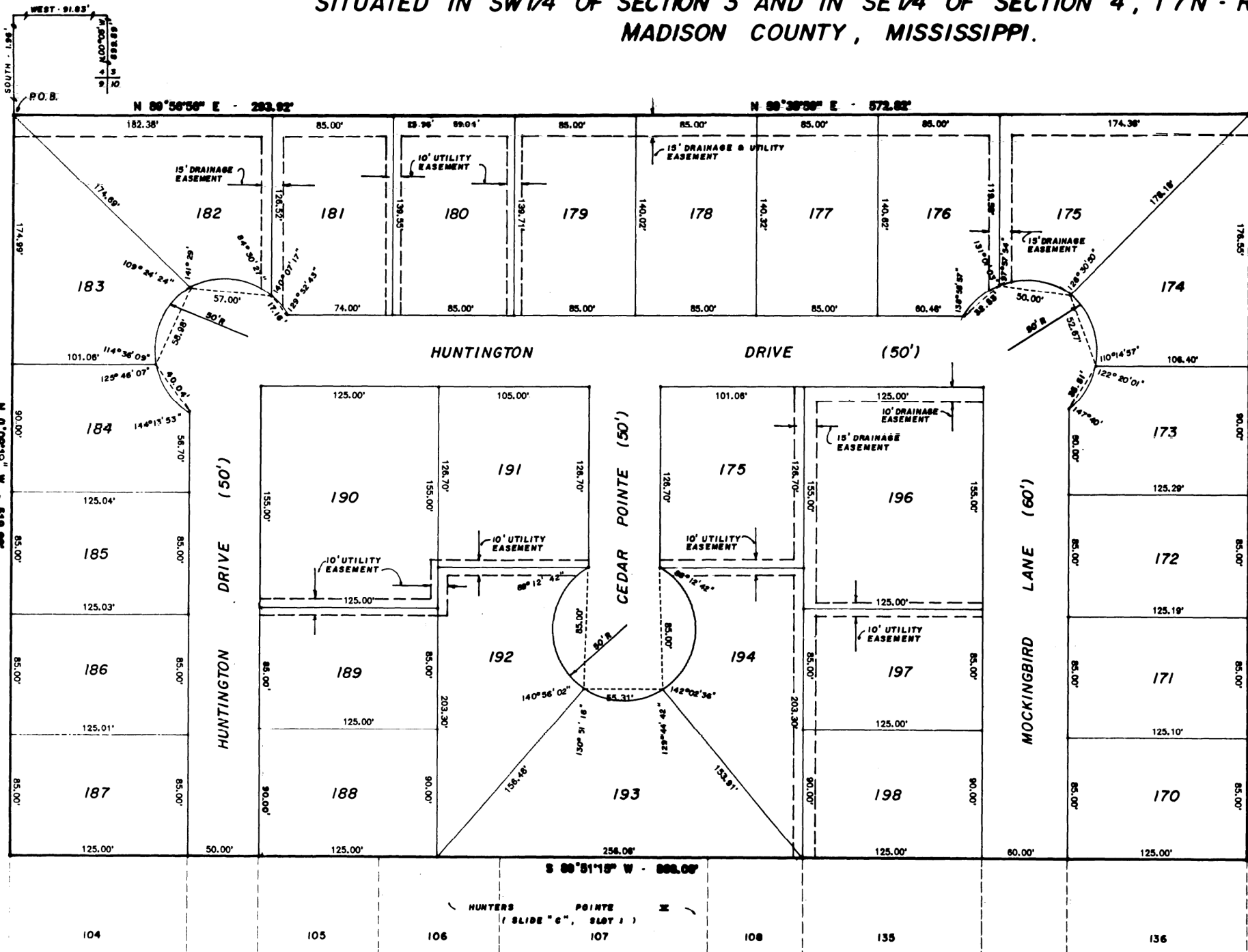
Billy V. Cooper
Billy V. Cooper, Chancery Clerk

FILING AND RECORDATION
STATE OF MISSISSIPPI
COUNTY OF MADISON

I, Billy V. Cooper, Chancery Clerk in and for said County and
State, do hereby certify that this Duplicate Plat of Hunter's
Pointe III was filed for record in my office on the 6th day
of August, 1990, and was duly recorded in Plat Cabinet
C-101, Book 725 of the records and maps and plats of Madison
County, Mississippi.

Given under my hand and seal of office in this the 6th day
of August, 1990.

Billy V. Cooper
Billy V. Cooper, Chancery Clerk
By: *S. Cole DC*

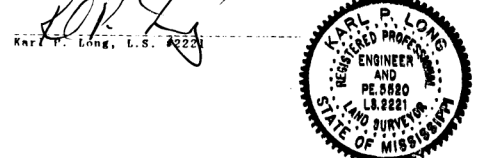


SURVEYOR'S CERTIFICATE
STATE OF MISSISSIPPI
COUNTY OF MADISON

I, Karl P. Long, Registered Land Surveyor, do hereby certify
that at the request of the undersigned OWNERS, I have subdivided
and platted the following parcel of land containing 10.348 acres
and being situated in the SW 1/4 of Section 3 and the SE 1/4 of
Section 4, T7N R2E, Madison County, Ms. and being more
particularly described as follows:

Commencing at the common corner of sections 3, 4, 9, & 10,
T7N R2E; thence N 00° 05' 05" W along the section line 899.89 ft.;
thence WEST 91.83 ft.; thence SOUTH 1.96 ft. to the POINT OF
BEGINNING; thence N 89° 56' 56" E - 293.92 ft.; thence N 89° 38'
59" E - 572.82 ft.; thence S 0° 04' 49" E - 521.55 ft. said
point also being the northeast corner of Hunter's Pointe II;
according to the plat thereon on file in the Office of the
Chancery Clerk of Madison County recorded in P.C. C. Slot 1
thence S 89° 51' 15" W - 866.06 ft. along the north line of said
Hunter's Pointe II; thence N 00° 09' 19" W - 519.99 ft. to the
POINT OF BEGINNING.

WITNESS MY SIGNATURE on this August 27 day of
1990.



OWNER'S CERTIFICATE
STATE OF MISSISSIPPI
COUNTY OF MADISON

Hunter's Pointe III, Inc. does hereby certify that the
aforementioned are the OWNER of the land described in the
foregoing Certificate of Karl P. Long, Registered Land Surveyor,
and that acting as duly authorized official of the aforementioned
have caused the said to be subdivided and platted as shown
hereon, and have designated the same as Hunter's Pointe III and
dedicate the street rights of way, utilities, and easements as
shown to the public use forever.

WITNESS OUR SIGNATURES on this the 24 day of AUG.
1990.

By: *Charles A. Scott*
Charles A. Scott, President

ACKNOWLEDGMENT
STATE OF MISSISSIPPI
COUNTY OF MADISON

PERSONALLY APPEARED BEFORE ME, the undersigned authority in
and for said County and State, Charles A. Scott, who
acknowledges that he is the PRESIDENT of Hunter's Pointe III,
Inc., and Karl P. Long, Surveyor, each of whom acknowledged that
he signed and delivered the plat on which this certificate
appears as his own act and deed on the day and year herein
mentioned.

GIVEN UNDER MY HAND and official seal on this the 24 day,
of August, 1990.

My Commission Expires April 20, 1993
By: *Susan L. Watkins*
Notary Public

For correction to plat of Hunter's Pointe III
See Book 725, page 132
Billy V. Cooper, Chancery clerk
By: *S. Cole DC* 10-29-90